

OLD TRAIL P.U.D. - PHASE 1

IN PART OF SECTIONS 23 AND 24, TOWNSHIP 40 SOUTH, RANGE 41 EAST
MARTIN COUNTY, FLORIDA

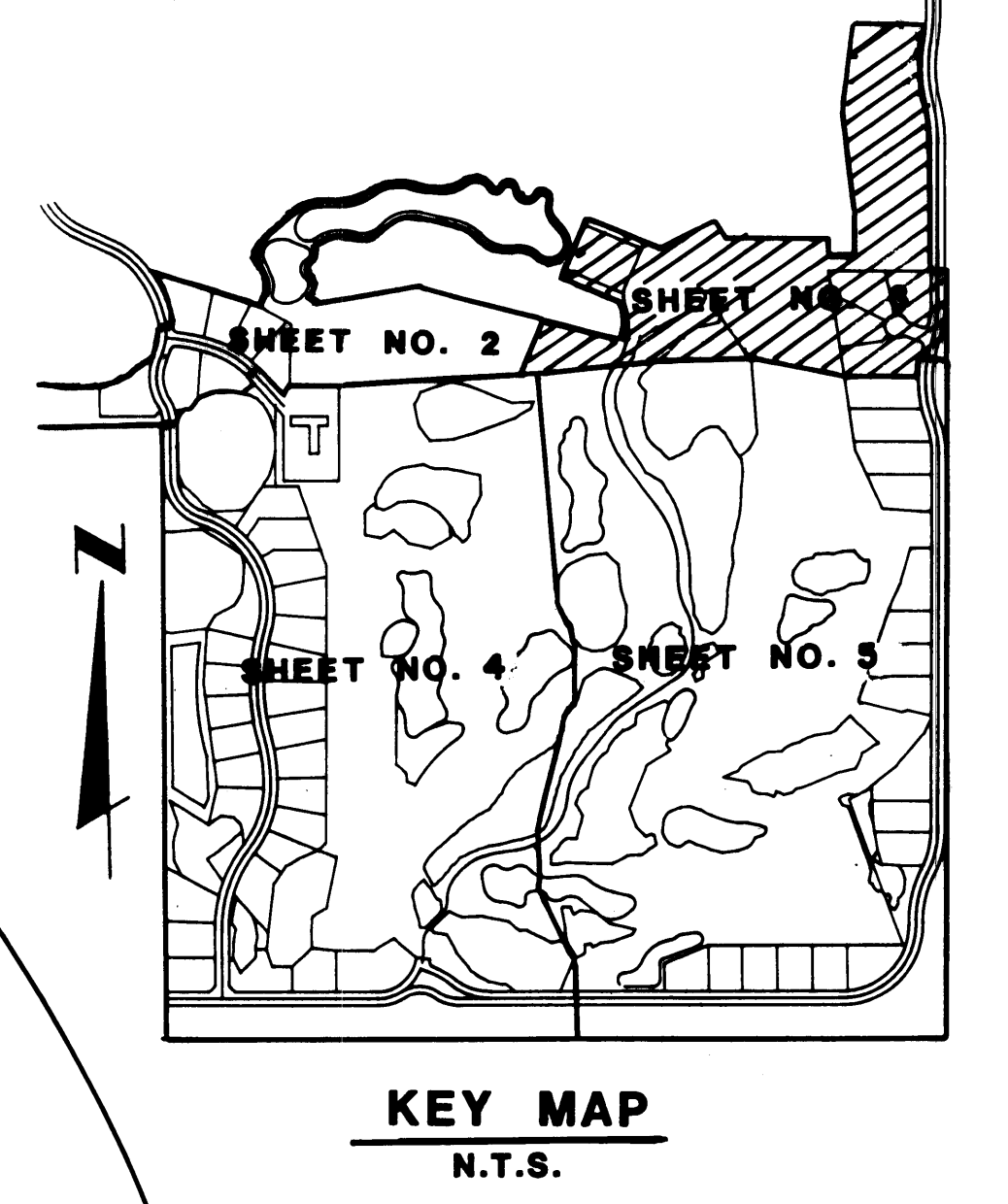
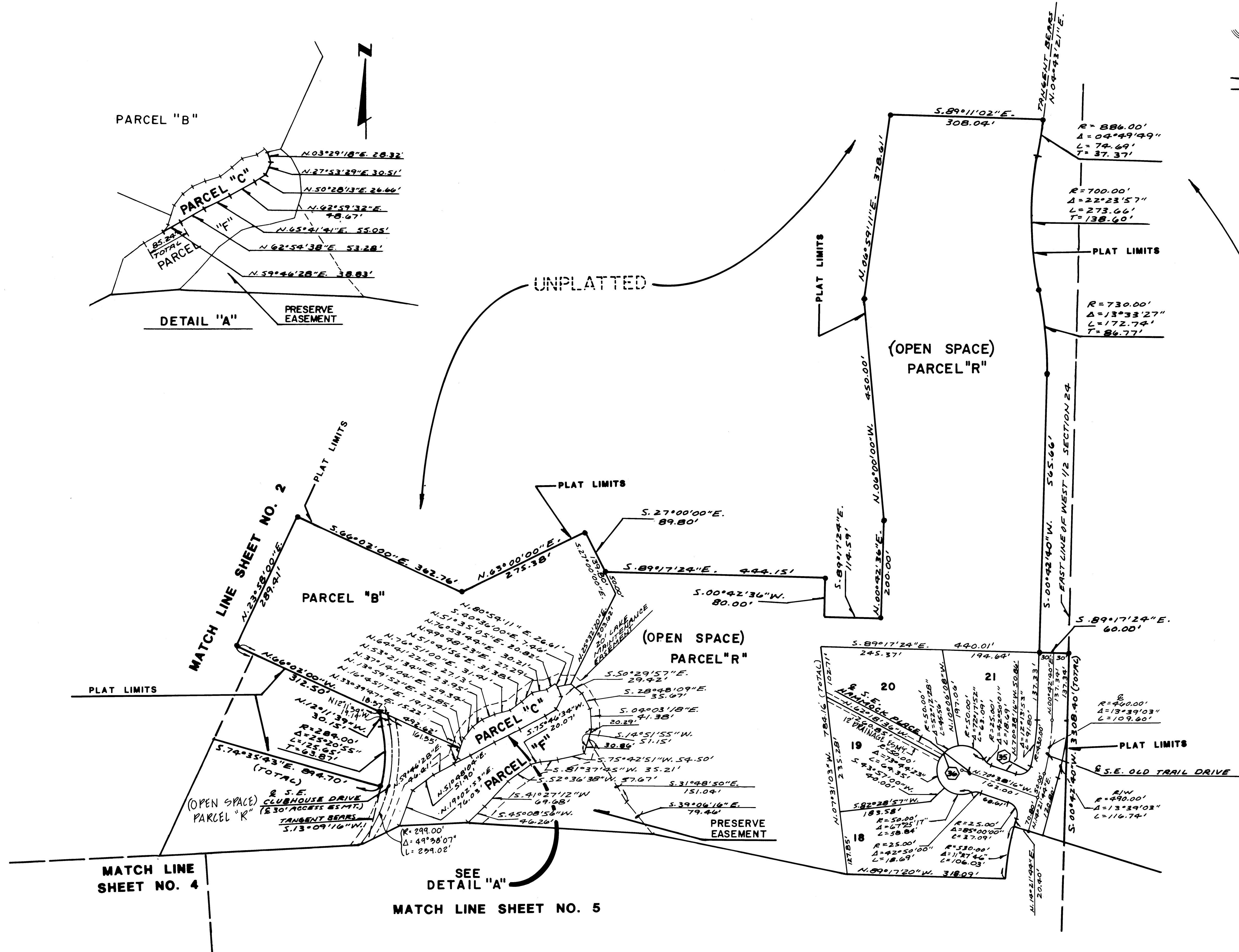
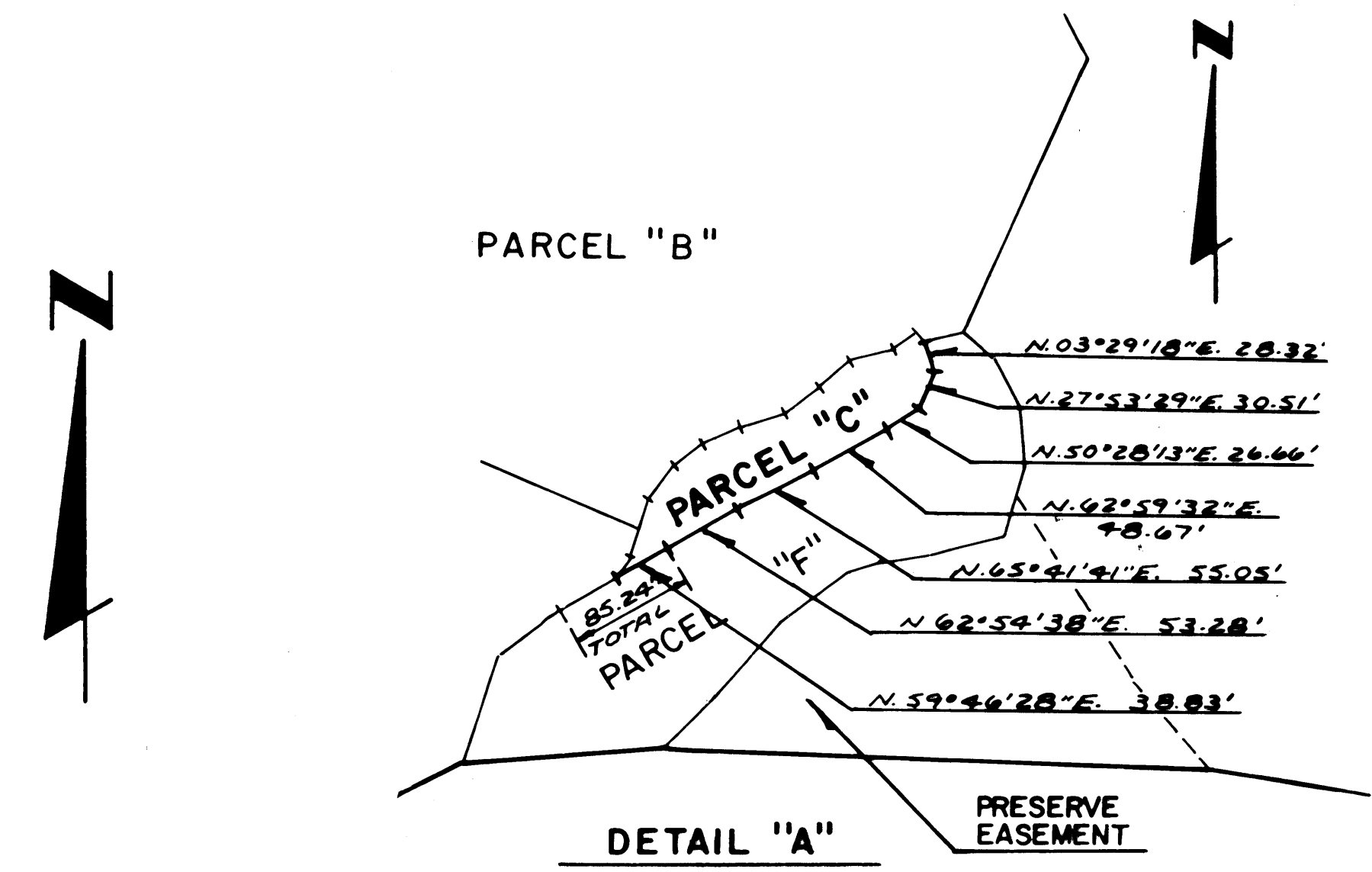
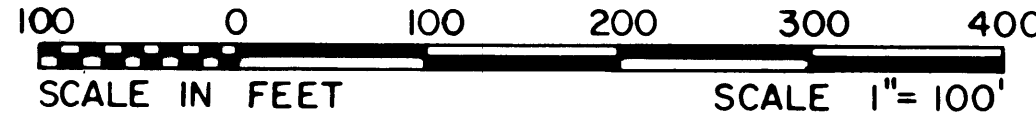
GEE & JENSON
ENGINEERS - ARCHITECTS - PLANNERS, INC.
WEST PALM BEACH, FLORIDA
JUNE 1986

I, Louise V. Isaacs, Clerk of the Circuit Court of Martin County, Florida, hereby certify that this plat was filed for record in Plat Book 10, Page 144 Martin County, Florida Public Records, this _____ day of _____, 1986 A.D.

LOUISE V. ISAACS, CLERK
CIRCUIT COURT
MARTIN COUNTY, FLORIDA

FILE NO. _____

BY: _____
Deputy Clerk



CURVE DATA	
35	R=25.00' Δ=96°25'10" L=42.07'
36	R=50.00' Δ=265°40'00" L=231.84'

COMPUTED PAC.
DRAWN D.C.B.
CHECKED W
COMMENTS _____
APPROVED _____
REVISION _____